

2022 IRC Welsh National Championship

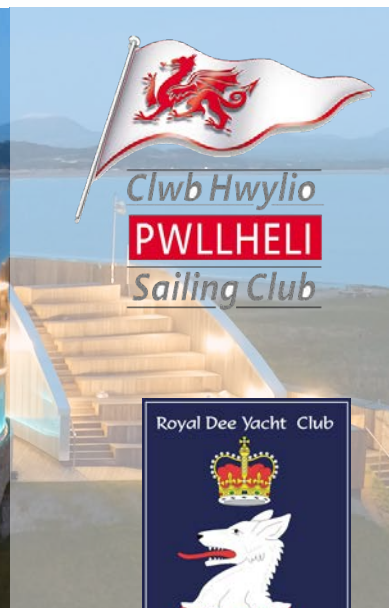
5th - 7th
August



Sailing Instructions

Incorporating the Celtic Championship - Featuring

- IRC 1 & 2 Inshore
- IRC Cruisers
- NHC Cruisers





1. RULES.

- 1.1. The Event will be governed by the rules as defined in The Racing Rules of Sailing.
- 1.2. IRC rules part A, B & C shall apply for IRC class 1, 2 .
- 1.3. Handicap for Cruisers (NHC) Regatta series shall apply.

2. NOTICE TO COMPETITORS

- 2.1. Notices to competitors will be posted electronically on the event "WhatsApp" group.
- 2.2. All communications between competitors and the race committee "IRC Race Officer" for IRC 1 and 2 inshore shall be on VHF channel 72.
- 2.3. IRC and NHC Cruisers will communicate with the race committee "PSC Bridge" using channel 17.
- 2.4. In case of difficulty with transmissions on the relevant VHF channel. VHF channel 37 will be used as an alternative channel. Flag '3rd Substitute' will be flown from the Committee boat and/or PSC Bridge to indicate this change.
- 2.5. If a red flag is displayed on the committee boat or bridge, a boat is blocking the working VHF channel. Please check your VHF PTT (Transmit) buttons.

3. CHANGES TO SAILING INSTRUCTIONS

- 3.1. Any change to the sailing instructions will be posted one hour before any race to which it applies, except that any change to the schedule of races will be posted by 2000 on the day before it will take effect.
- 3.2. Amendments made afloat will be signalled by the display of flag W with three sound signals. The Race Committee may communicate these either verbally or in writing.

4. SIGNALS MADE ASHORE

- 4.1. Signals made ashore will be displayed at the PSC bridge.
- 4.2. When flag AP is displayed ashore, '1 minute' is replaced with 'not less than 45 minutes' in the race signal AP.

5. SCHEDULE OF RACES and CLASS FLAGS

- 5.1. Dates of racing: 5th August to 7th August.
- 5.2. Number of races:

Class	Number	Max Races per Day
IRC 1 – Class Flag 1	9	3,4,4
IRC 2 – Class Flag 2		
IRC Cruisers – Class Flag 3	5	2,2,1
NHC Cruisers – Class Flag 7		
It is intended all fleets will race a coastal or fixed mark segment.		
One extra race per day may be sailed, provided that no class becomes more than one race ahead of schedule and the change is made according to instruction 3		



- 5.3. The scheduled time of the warning signal for all Fleets for the 3 race days: All Fleets - Friday 5th 11:25 Saturday 6th 12:00 Sunday 7th 13:10
- 5.4. To alert boats that a race or sequence of races will begin soon, a call will be made on CH17/72 at least five minutes before a warning signal is made.
- 5.5. On the last day of the regatta no warning sequence will commence after 16:00 BST.
- 5.6. A coastal race may be held on Friday or Saturday, if this race is run, then there will be a maximum of two races only on this day and the coastal race result is none discardable.

6. RACING AREA

- 6.1. Cardigan Bay

7. COURSES IRC 1 AND 2 PLUS IRC/NHC CRUISERS

- 7.1. IRC/NHC Cruisers - Fixed Course will be displayed on the CHPSC Bridge. Courses 1 to 68 are available in the CHPSC 2022 Racing Pack. Courses 70 to 99 (if used) will be posted on the official notice board and may be repeated on the CHPSC Web page. A multiplier number, (black on a white background) may follow indicating all marks to be repeated.
- 7.2. Variable course. The course will be displayed on the CHPSC Bridge or committee boat using numbers with a red or green background denoting whether a mark is to be passed to port or starboard respectively. A multiplier number, (black on a white background) may follow indicating all marks to be repeated.
- 7.3. IRC 1 and 2 will race courses as displayed on the committee boat as per Addendum A, and the fixed marks in addendum B

8. MARKS POSITIONS - PWLLHELI

- 8.1 The position of the fixed marks for the 2022 championship are as per the course card, as attached to the appendix to these sailing instructions.
- 8.2 The position of the marks is the April 2022 version.

9. THE START

- 9.1. The starting line for IRC and NHC cruiser's: The Start Line is a transit of the orange pole on the PSC Bridge, a white mast with an orange top section on the foreshore and the ODM (mark O). The seaward end of the line is bounded by an ODM (mark O). The shore end may be bounded by an IDM. Boats shall pass between these marks (when both are present), in the direction of the first mark of the course, to start.
- 9.2. Boats whose warning signal has not been made shall avoid the starting area during the starting sequence for other races.
- 9.3. A boat starting later than 4 minutes after her starting signal will be scored Did Not Start without a hearing. this changes rules A4 and A5.
- 9.4. If any part of a boat's hull, crew or equipment is on the course side of the starting line during the two minutes before her starting signal and she is identified, the race committee will attempt to broadcast her sail number on VHF channel 17. Failure to make a broadcast or to time it accurately will not be grounds for a request for redress. This changes rule 62.1(a).
- 9.5. IRC 1 and 2 will have a committee boat start as per the appendix



10. CHANGE OF THE NEXT LEG OF THE COURSE

- 10.1. **Shorten Course IRC/NHC Cruisers** - Shortening of course will be in accordance with RRS32. In addition, amending RRS32, the course may be shortened at any mark, signalled by two sound signals and Flag S on the PSC bridge. As the first boat approaches the last mark intended to be rounded. The fleet will then proceed after rounding the mark to the appropriate finish line. Finish Line (defined above) which will be crossed from the course direction. The Race Officer may announce his intention to shorten course on VHF Channel 17/72 Alternatively, a course may be shortened at a mark/turn point at some point on the course, if directed by the race officer on the radio, all boats should record their finish/mark rounding time.

11. THE FINISH

- 11.1. The finish Line for IRC/NHC cruisers is the same as the start, a transit of the orange pole on the PSC bridge and the ODM (mark O)
- 11.2. The finish line for the IRC 1 and 2 will be as per the course set by the RO and as shown in the addendum A

The Coastal race (if run) will use the Plas Heli Finish Line, a line between Pwllheli Fairway Buoy (Iso.2s) located N52 53.000 W4 22.900 And Plas Heli Bridge located - N52 53.336 W4 24.230 as per the picture in below



- 11.3. Please note this is not the usual line used as the start in Pwllheli.

12. TIME LIMITS AND TARGET TIMES

- 12.1. Time limits are as follows:

Class	Time limit
IRC 1 and 2	2.5 hrs (Does not apply to the Coastal Race which is 6 hrs).
IRC/NHC Cruisers	2.5 hrs

- 12.2. Boats failing to finish within 30 minutes (1hr for coastal race) after the first boat sails the course and finishes will be scored Did Not Finish without a hearing. This changes rules 35, A4 and A5.



13. HEARINGS AND REQUESTS FOR REDRESS

- 13.1. Hearing forms are available at the race office, located at PSC. Hearing and requests for redress or reopening shall be delivered there within the appropriate time limit.
- 13.2. For each class, the hearing time limit is 90 minutes after the last boat has finished the last race of the day or the race committee signals no more racing today, whichever is later.
- 13.3. Notices will be posted no later than 30 minutes after the hearing time limit to inform competitors of hearings in which they are parties or named as witnesses. Hearings will be held in the protest room, located at Plas Heli, beginning at the time posted.
- 13.4. Notices of hearings by the race committee or hearing committee will be posted to inform boats under rule 61.1(b).
- 13.5. Breaches of instructions, 18.1, 19.1, 20, 23, will not be grounds for a hearing by a boat. This changes rule 60.1(a). Penalties for these breaches may be less than disqualification if the hearing committee so decides.
- 13.6. On the last scheduled day of racing a request for redress based on a hearing committee decision shall be delivered no later than 30 minutes after the decision was posted. This changes rule 62.2.
- 13.7. The Post Race Penalty and the Advisory Hearing and RYA Arbitration procedures of the RYA Rules Disputes Procedures will be available. Decisions from RYA Arbitration can be referred to a protest committee but cannot be reopened or appealed. See the Official Notice Board for details.

14. SCORING

- 14.1. **IRC 1, 2**
 - 14.1.1. Two races are required to be completed to constitute a series.
 - 14.1.2. When fewer than 6 races have been completed, a boat's score will be the total of her race scores.
 - 14.1.3. When 6 or more races have been completed, a boat's series score will be the total of her race scores excluding her worst score. The Coastal Race cannot be discarded.
- 14.2. **IRC/NHC CRUISER:**
 - 14.2.1. All races to count, one race required for a series.

15. SAFETY REGULATIONS

- 15.1. A boat that retires from a race shall notify the race committee as soon as possible.

16. EVENT ADVERTISING

- 16.1. Boats shall display event advertising supplied by the organizing authority as supplied.

17. PRIZES

- 17.1. Prizes will be given as described in the Notice of Race, additional prizes may be awarded.
- 17.2. Sports boats will sail with class 1 and/or 2 dependant on rating but will have a separate trophy

18. DISCLAIMER OF LIABILITY

- 18.1. **Risk Statement**
- 18.2. RRS Rule 3 of the Racing Rules of Sailing states: "The responsibility for a boat's decision to participate in a race or to continue racing is hers alone."
- 18.3. Sailing is by its nature an unpredictable sport and therefore inherently involves an element of risk. By taking part in the event, each competitor agrees and acknowledges that:



- 18.3.1. They are aware of the inherent element of risk involved in the sport and accept responsibility for the exposure of themselves, their crew and their boat to such inherent risk whilst taking part in the event.
- 18.3.2. They are responsible for the safety of themselves, their crew, their boat and their other property whether afloat or ashore.
- 18.3.3. They accept responsibility for any injury, damage or loss to the extent caused by their own actions or omission.
- 18.3.4. Their boat is in good order, equipped to sail in the event and they are fit to participate.
- 18.3.5. The provision of a race management team, patrol boats and other officials and volunteers by the event organiser does not relieve them of their own responsibilities.
- 18.3.6. The provision of patrol boat cover is limited to such assistance, particularly in extreme weather conditions, as can be practically provided in the circumstances.
- 18.3.7. It is their responsibility to familiarise themselves with any risks specific to this venue or this event drawn to their attention in any rules and information produced for the venue or event and to attend any safety briefing held for the event.
- 18.3.8. They are responsible for ensuring that their boat is equipped and seaworthy so as to be able to face extremes of weather; that there is a crew sufficient in number, experience and fitness to withstand such weather; and that the safety equipment is properly maintained, stowed and in date and is familiar to the crew.

19. INSURANCE

- 19.1. Each participating boat shall be insured with valid and adequate third-party liability insurance per incident.

20. Data Privacy Statement.

- 20.1. The personal information you provide to the organising authority will be used to facilitate your participation in the event. If you have agreed to be bound by the Racing Rules of Sailing and the other rules that govern the event (the rules), the legal basis for processing that personal information is contract. If you are not bound by the rules, the legal basis for processing that personal information is legitimate interest. Your personal information will be stored and used in accordance with the organising authority's privacy policy. When required by the rules, personal information may be shared with the RYA and/or World Sailing. The results of the event and the outcome of any hearing or appeal may be published.

Addendum A Course

OX	COURSE: OUTER with reaching finish
Signal	Mark Rounding Order
OX2	Start - 1 - 2 - 3s/3p - 2 - 3p - 5 - Finish
OX3	Start - 1 - 2 - 3s/3p - 2 - 3s/3p - 2 - 3p - 5 - Finish

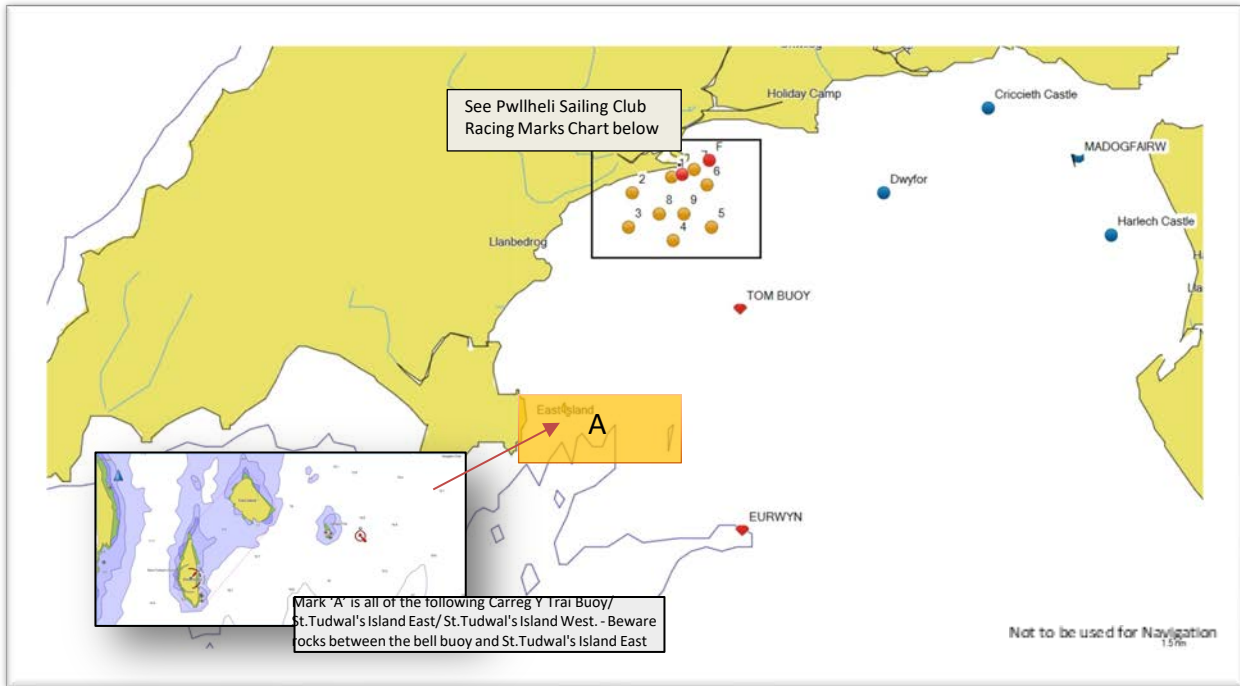
IX	COURSE: INNER with reaching finish
Signal	Mark Rounding Order
IX2	Start - 1 - 4s/4p - 1 - 2 - 3p - 5 - Finish
IX3	Start - 1 - 4s/4p - 1 - 4s/4p - 1 - 2 - 3p - 5 - Finish

L	COURSE: WINDWARD / LEEWARD with reaching finish
Signal	Mark Rounding Order
L2	Start - 1 - 4s/4p - 1 - 4p - Finish
L3	Start - 1 - 4s/4p - 1 - 4s/4p - 1 - 4p - Finish
L4	Start - 1 - 4s/4p - 1 - 4s/4p - 1 - 4s/4p - 1 - 4p - Finish

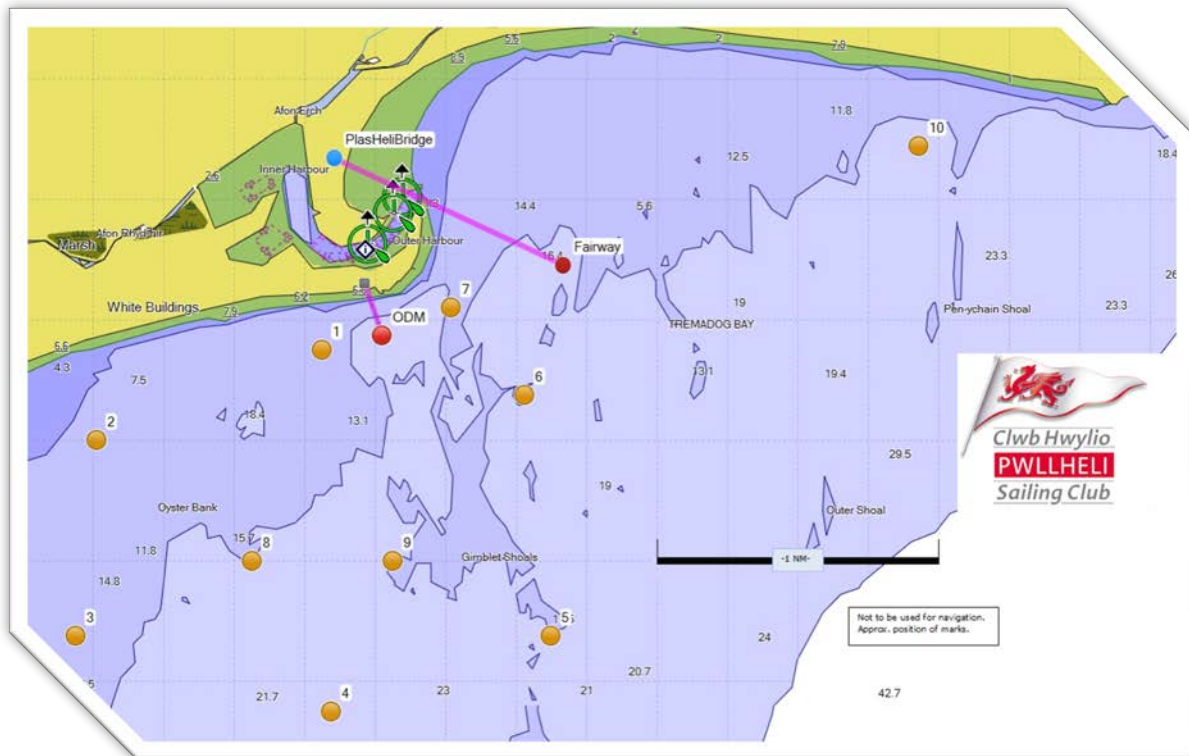
TL	COURSE: TRIANGLE / WINDWARD - LEEWARD with reaching finish
Signal	Mark Rounding Order
TL2	Start - 1 - 2 - 3 - 1 - 1a - 3 - Finish
TL3	Start - 1 - 2 - 3 - 1 - 1a - 3 - 1 - 2 - 3 - Finish
TL4	Start - 1 - 2 - 3 - 1 - 1a - 3 - 1 - 2 - 3 - 1 - 1a - 3 - Finish

NOTE: Mark 1A May not be laid

Addendum B - Fixed Marks and coastal course information



Pwllheli SC Race Mark Location chart





MARK POSITIONS AT APRIL 2022

Mark No.	Description/Sponsor		Latitude	Longitude	Buoy	Top Mark
O	Outer Distance Mark (Welsh Water)		52° 52.747'N	04° 23.960'W	Large Yellow Barrel	
1	West Turning Mark		52° 52.738'N	04° 24.218'W	Large Barrel	Yellow Spherical
2	West End - Clwb Hwyllo Pwllheli		52° 52.409'N	04° 25.620'W	Large Barrel	Yellow Spherical
3			52° 51.755'N	04° 25.750'W	Large Barrel	Yellow Spherical
4			52° 51.562'N	04° 24.234'W	Large Barrel	Yellow Spherical
5			52° 52.255'N	04° 22.230'W	Large Barrel	Yellow Spherical
6			52° 52.571'N	04° 22.859'W	Large Barrel	Yellow Spherical
7	East Turning Mark		52° 52.963'N	04° 23.388'W	Large Barrel	Yellow Spherical
8			52° 52.028'N	04° 24.659'W		
9			52° 52.170'N	04° 23.680'W	Large Barrel	Red Spherical
10			52° 53.375'N	04° 20.928'W	Large Barrel	Red Spherical
F	Pwllheli Fairway		52° 53.000'N	04° 23.000'W	Red & White striped	
IDM	Inner Distance Mark		52° 52.850'N	04° 24.053'W		
C	Causeway		52° 41.210'N	04° 25.330'W	Westerly Cardinal Buoy	
D	Dwyfor		52° 52.400'N	04° 17.400'W	Inflatable Racing Mark	
E	Eurwyn	#	52° 47.000'N	04° 22.000'W	Yellow Buoy	X
T	Tom Buoy	#	52° 50.200'N	04° 22.700'W	Yellow Can	
HC	Harlech Castle		52° 51.600'N	04° 10.000'W	Inflatable Racing Mark	
CC	Criccieth Castle		52° 54.000'N	04° 14.000'W	Inflatable Racing Mark	
M	Madog Fairway	#	52° 52.970'N	04° 11.180'W	Red & White striped	
Y	Gull Islands		Yachts must not pass between the two islands. (see Admiralty Chart 1971)			
A	Carreg Y Trai Buoy/ St. Tudwal's Island East/ St. Tudwal's Island West.				Beware rocks between the bell buoy and St. Tudwal's Island East	



Host Venu -Plas Heli – The Welsh National Sailing Academy and Events Centre
A Not for Profit Distributing Community Enterprise



CHPSC at Plas Heli The Welsh National Sailing Academy and Event Centre

NOTES:
